

Installation Instructions

Gallant ST EM Dlight: S-GL-XW/EM3/_



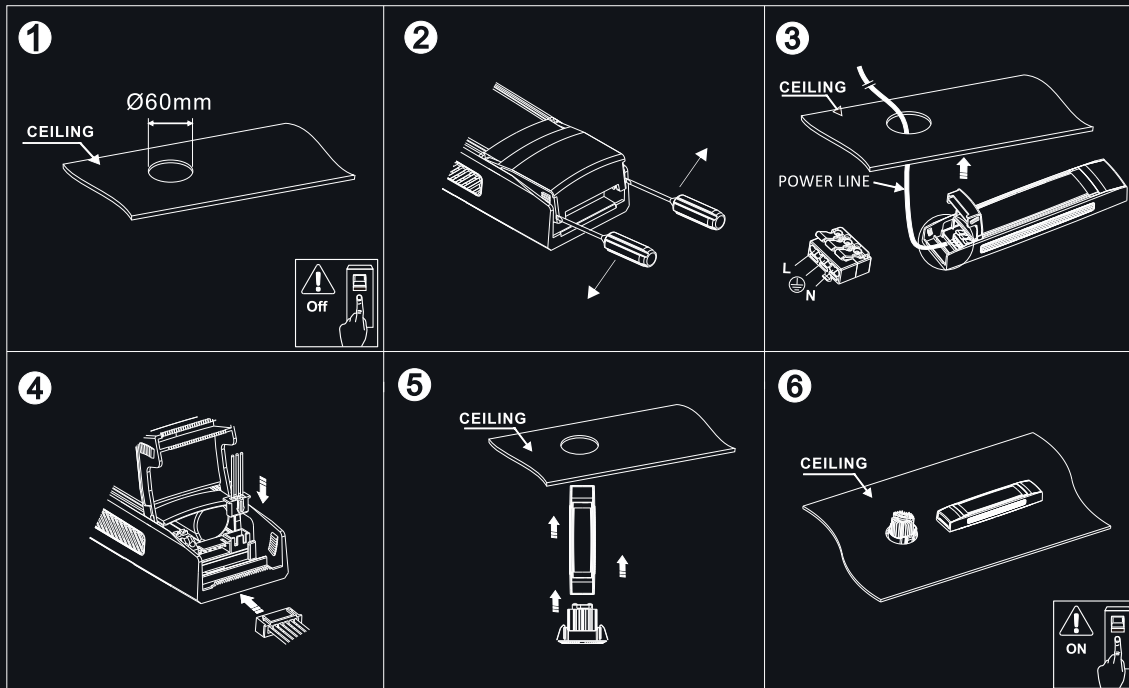
Safety Precautions.

- Power Isolation: Always disconnect the power supply before installing, removing, or servicing the product to prevent electric shock, injury, or damage.
- Qualified Installation: Luminaires should be installed by a certified electrician in accordance with current local wiring regulations.
- Damaged Components: Replace any broken or faulty parts promptly. Spectre Lighting cannot be held liable for issues resulting from poor installation practices.
- Ambient Temperature: Ensure the room temperature does not exceed 25°C during operation.
- Power Supply Compatibility: These products are intended for use with a mains supply of 220-240V~ at 50/60Hz.
- Inrush Current Consideration: You may need to upgrade your MCBs to accommodate higher inrush currents.
- Insulation Testing: Do not perform insulation resistance tests while the product is connected to the circuit.
- Preparation: Review all instructions thoroughly and confirm you have the necessary tools and accessories for proper installation.

5yrs
Warranty

Unit 8 Gemini 8 Business Park
Charon Way
Apollo Park
Warrington
WA5 7AE

www.spectre-lighting.com



Installation Instructions

- Fig 1 - Ensure power supply is isolated before proceeding with installation. Locate desired surface for recessed installation. Measure, draw and cut out hole applicable to product size. (see page 2 for cut out measurements).
- Fig 2 - Take remote housing (disconnected from downlight if required). Open remote housing protective cover.
- Fig 3 - Feed through supply cable. Connect supply cables to terminals. These products are intended for use with a mains supply of 220-240V~ at 50/60Hz. Ensure a permeant supply us utilised. Once supply cable is in position, secure and fix supply cables into position replace remote housing protective cover.
- Fig 4 - Connect Downlight head via male / female connectors as shown.
- Fig 5 - Retract housing spring clips and offer into cut out, housing first then downlight. Ensure the remote housing sits adjacent to the downlight.
- Fig 6 - Reinststate power supply.

IP40



UK
CA

RoHS
Compliant



Installation Instructions

Gallant ST EM Dlight: S-GL-XW/EM3/_

Specification

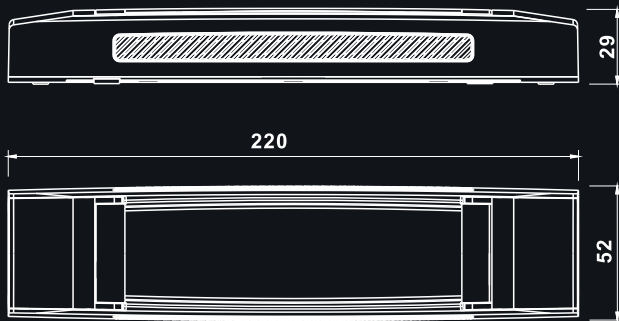
S-GL-2W/EM3/_

- Voltage Range- 220-240V 50/60Hz
- CCT - 6500K
- CRI>60
- 2W Max
- Battery - 3.2V 1500mAh LiFePO₄
- Open Lens-140lm / Corridor Lens-120lm
- Temp Range- 0°C-40°C

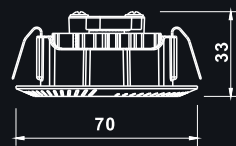
S-GL-3W/EM3/_

- Voltage Range- 220-240V 50/60Hz
- CCT - 6500K
- CRI>60
- 3W Max
- Battery - 3.2V 3000mAh LiFePO₄
- Open Lens-230lm / Corridor Lens-210lm
- Temp Range- 0°C-40°C

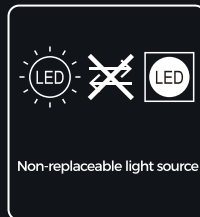
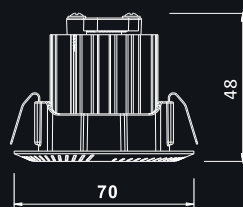
Dimensions



Lamp head for Gallant 2W



Lamp head for Gallant 3W



The light source of this luminaire is not replaceable, when the light source reaches its end of life the luminaire shall be replaced, utilising the existing driver.

⚠ Important Disposal Information for Waste Electrical & Electronic Equipment (WEEE)

Please be aware that Waste Electrical and Electronic Equipment (WEEE), identified by the crossed-out wheelie bin symbol, must NOT be disposed of with regular household waste.

We encourage you to support reuse, recycling, and responsible recovery by returning this product—once it reaches the end of its life—to an appropriate collection point. This may include a designated waste equipment centre, a civic amenity site, or the retailer where you originally purchased the item or are buying a replacement.

Improper disposal of this equipment may release substances that are harmful to both human health and the environment. To prevent this, it is essential that WEEE is separated from general waste and processed through approved recycling channels.

The crossed-out wheelie bin symbol serves as a reminder that this product requires special handling in accordance with local WEEE regulations.

IP40



Unit 8 Gemini 8 Business Park
Charon Way
Apollo Park
Warrington
WA5 7AE

www.spectre-lighting.com

ON Self Test



1 Manual Test

DIP Switch Test Option

- The DIP Switch is located inside the product on the main PCB.
- With the DIP Switch in the 1 position, the fitting will be Manual Test.
- With the DIP Switch in the ON position, the fitting will be Self Test.

LED indicator status

Indicator	Status	LED Indicator Flash Code		
Green	No Faults	ON		
	Battery Fault	Flashing once every 3s		
	LED Fault	Flashing twice every 3s		
Red	Duration Time: <3 hours	Flashing three times every 3s		
	Self-Test Mode	Yearly Test Flashing four times every 1s (Last 3 hours)	Monthly Test Flashing four times every 1s (Last 10 mins)	Manual Test Flashing four times every 1s (Last 5 mins)

