

Installation Instructions

Nox: S-NX-WL/_/CTS/_



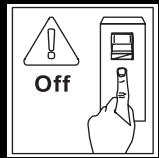
Unit 8 Gemini 8 Business Park
Charon Way
Apollo Park
Warrington
WA5 7AE

www.spectre-lighting.com

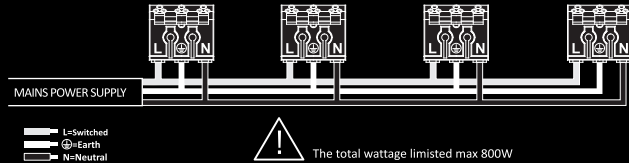
Safety Precautions.

- Power Isolation: Always disconnect the power supply before installing, removing, or servicing the product to prevent electric shock, injury, or damage.
- Qualified Installation: Luminaires should be installed by a certified electrician in accordance with current local wiring regulations.
- Damaged Components: Replace any broken or faulty parts promptly. Spectre Lighting cannot be held liable for issues resulting from poor installation practices.
- Ambient Temperature: Ensure the room temperature does not exceed 25°C during operation.
- Power Supply Compatibility: These products are intended for use with a mains supply of 230–240V~ at 50/60Hz.
- Inrush Current Consideration: You may need to upgrade your MCBs to accommodate higher inrush currents.
- Insulation Testing: Do not perform insulation resistance tests while the product is connected to the circuit.
- Preparation: Review all instructions thoroughly and confirm you have the necessary tools and accessories for proper installation.

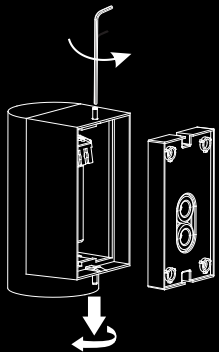
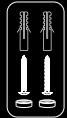
5yrs
Warranty



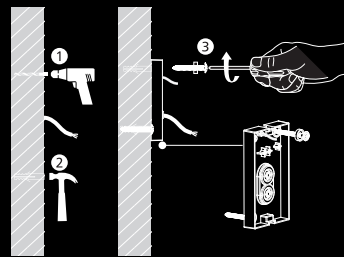
Loop in & Loop out wiring diagram



1

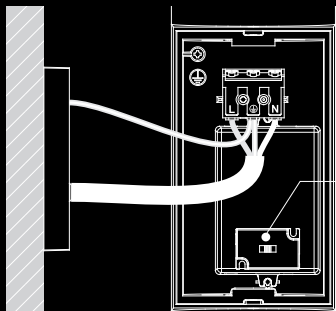


2



Standard

3

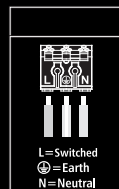


4

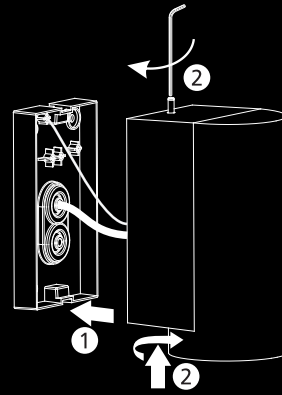


Select preferred color temperature.

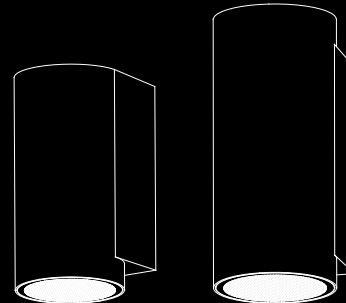
5



Wire diameter: 0.5-2.5mm²
Wire stripping length: 8-10mm



6



COMPLETE

7



Installation Instructions

Fig 1. Ensure power supply is isolated before proceeding with installation.

Fig 2. Open the installation base with screwdriver.

Fig 3. Fix the base on the wall.

Fig 4. Feed through supply cable into base via cable grommet. Applying adequate sealant to maintain IP65 rating.

Fig 5. Set product to desired CCT output using dip switches box located in the fixture. Connect supply cable to luminaire into push fit terminations ensuring correct polarity is observed. These products are intended for use with a mains supply of 220–240V~ at 50/60Hz.

Fig 6. Fix the luminaire to the base with screwdriver.

Fig 7. Reinstate power supply.

IP65



UK
CA

RoHS
Comp Liant



Installation Instructions

Nox: S-NX-WL/_/CTS/_



Unit 8 Gemini 8 Business Park
Charon Way
Apollo Park
Warrington
WA5 7AE

www.spectre-lighting.com

Specification

S-NX-WL/5/CTS/B (S-NX-WL/5/CTS/GR)

- Voltage Range – AC 220-240V 50/60Hz
- CCT – 3000K /4000K
- CRI80
- IP65/IK08
- 5W
- 450-490Lm @4000K /96Lm/w
- Temp Range –20°C –40 °C

Specification

S-NX-WL/2X5/CTS/B (S-NX-WL/2X5/CTS/GR)

- Voltage Range – AC 220-240V 50/60Hz
- CCT – 3000K /4000K
- CRI80
- IP65/IK08
- 2X5W
- 1,060-1,130Lm @4000K /115Lm/w
- Temp Range –20°C –40 °C

Specification

S-NX-WL/10/CTS/B (S-NX-WL/10/CTS/GR)

- Voltage Range – AC 220-240V 50/60Hz
- CCT – 3000K /4000K
- CRI80
- IP65/IK08
- 10W
- 980-1,050Lm @4000K /105Lm/w
- Temp Range –20°C –40 °C

Specification

S-NX-WL/2X10/CTS/B (S-NX-WL/2X10/CTS/GR)

- Voltage Range – AC 220-240V 50/60Hz
- CCT – 3000K /4000K
- CRI80
- IP65/IK08
- 2X10W
- 2,040-2,200Lm @4000K /110Lm/w
- Temp Range –20°C –40 °C

Specification

S-NX-WL/5/CTS/W

- Voltage Range – AC 220-240V 50/60Hz
- CCT – 3000K /4000K
- CRI80
- IP65/IK08
- 5W
- 490-530Lm @4000K /105Lm/w
- Temp Range –20°C –40 °C

Specification

S-NX-WL/2X5/CTS/W

- Voltage Range – AC 220-240V 50/60Hz
- CCT – 3000K /4000K
- CRI80
- IP65/IK08
- 2X5W
- 1,150-1,230Lm @4000K /125Lm/w
- Temp Range –20°C –40 °C

Specification

S-NX-WL/10/CTS/W

- Voltage Range – AC 220-240V 50/60Hz
- CCT – 3000K /4000K
- CRI80
- IP65/IK08
- 10W
- 1,060-1,140Lm @4000K /114Lm/w
- Temp Range –20°C –40 °C

Specification

S-NX-WL/2X10/CTS/W

- Voltage Range – AC 220-240V 50/60Hz
- CCT – 3000K /4000K
- CRI80
- IP65/IK08
- 2X10W
- 2,220-2,390Lm @4000K /120Lm/w
- Temp Range –20°C –40 °C



Important Disposal Information for Waste Electrical & Electronic Equipment (WEEE)

Please be aware that Waste Electrical and Electronic Equipment (WEEE), identified by the crossed-out wheelee bin symbol, must NOT be disposed of with regular household waste.

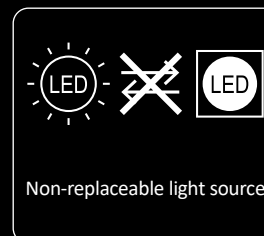
We encourage you to support reuse, recycling, and responsible recovery by returning this product—once it reaches the end of its life—to an appropriate collection point. This may include a designated waste equipment centre, a civic amenity site, or the retailer where you originally purchased the item or are buying a replacement.

Improper disposal of this equipment may release substances that are harmful to both human health and the environment. To prevent this, it is essential that WEEE is separated from general waste and processed through approved recycling channels.

The crossed-out wheelee bin symbol serves as a reminder that this product requires special handling in accordance with local WEEE regulations.

Dimensions

S-NX-WL/5_	S-NX-WL/2X5_	S-NX-WL/10_	S-NX-WL/2X10_
L124*W60*H75mm	L140*W60*H75mm	L160*W80*H75mm	L181*W80*H75mm



The light source of this luminaire is not replaceable, when the light source reaches its end of life the luminaire shall be replaced, utilising the existing driver

IP65

