

# Installation Instructions

## Arka : S-AK-WL/\_/4/B



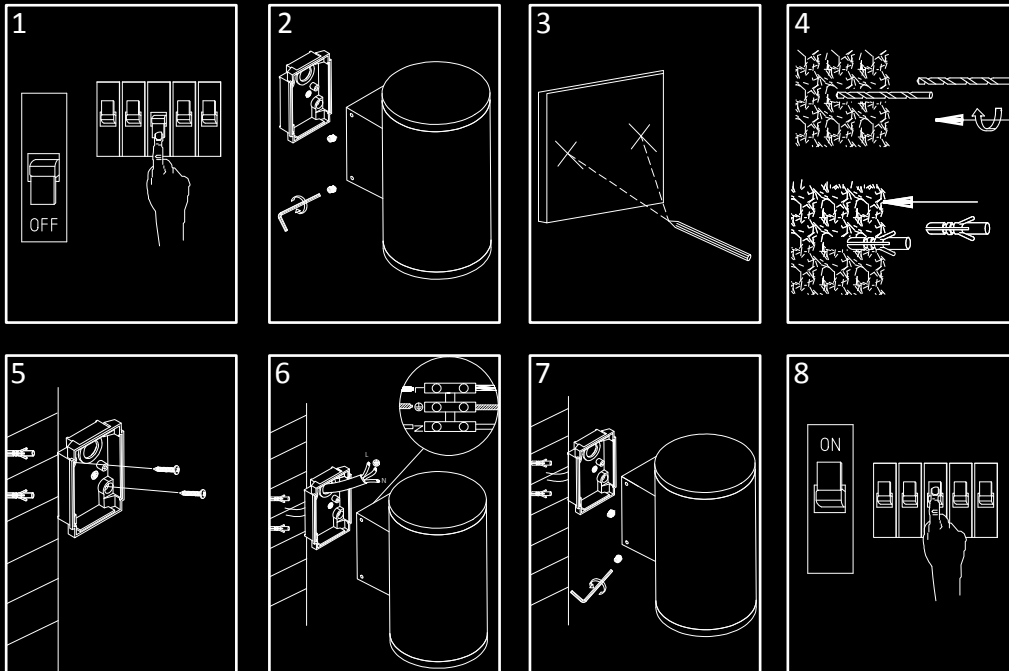
5 yrs  
Warranty

### Safety Precautions.

- Power Isolation: Always disconnect the power supply before installing, removing, or servicing the product to prevent electric shock, injury, or damage.
- Qualified Installation: Luminaires should be installed by a certified electrician in accordance with current local wiring regulations.
- Damaged Components: Replace any broken or faulty parts promptly. Spectre Lighting cannot be held liable for issues resulting from poor installation practices.
- Ambient Temperature: Ensure the room temperature does not exceed 25°C during operation.
- Power Supply Compatibility: These products are intended for use with a mains supply of 230–240V~ at 50/60Hz.
- Inrush Current Consideration: You may need to upgrade your MCBs to accommodate higher inrush currents.
- Insulation Testing: Do not perform insulation resistance tests while the product is connected to the circuit.
- Preparation: Review all instructions thoroughly and confirm you have the necessary tools and accessories for proper installation.

Unit 8 , Gemini 8 Business Park  
Charon Way  
Apollo Park  
Warrington  
WA5 7AE

[www.spectre-lighting.com](http://www.spectre-lighting.com)



### Installation Instructions

- Fig 1 - Ensure mains supply is switched off before commencing work.
- Fig 2 - Remove backplate using allen key to loosen the set screw and remove the backplate.
- Fig 3 - Mark the installation position of the light fixture with a marker on the desired surface and located in area of supply cable.
- Fig 4 - Install plastic expansion anchors: Drill holes at the marked positions and insert plastic expansion anchors.
- Fig 5 - Fix the backplate and secure by screwing the mounting screws into the plastic expansion tubes.
- Fig 6 - Feed supply cables through cable gland / entry hole and connect the power supply cables to fitting terminals. Ensuring correct polarity is observed. Ensure cable entry point is adequately sealed to retain IP rating.
- Fig 7 -Fix the body and backplate and secure with allen key. Check gasket position and compression to retain IP rating.
- Fig 8 -Reinstate power supply.

IP65



UK  
CA

RoHS  
Compliant



# Installation Instructions

## Arka: S-AK-WL/\_/4/B



Unit 8 , Gemini 8 Business Park  
Charon Way  
Apollo Park  
Warrington  
WA5 7AE

[www.spectre-lighting.com](http://www.spectre-lighting.com)

### Specification

#### S-AK-WL/2X18/4/B

- Voltage Range – 220-240V 50/60Hz
- CCT – 4000K
- IP65 / IK05
- PF>0.9
- CRI80
- 2x18W – 100Lm/W
- 2 x 1,800lm
- Temp Range -20 – 45°C
- Lifetime:30000hrs

#### S-AK-WL/2X20/4/B

- Voltage Range – 220-240V 50/60Hz
- CCT – 4000K
- IP65 / IK05
- PF>0.9
- CRI80
- 2x20W – 100Lm/W
- 2 x 2,00lm
- Temp Range -20 – 45°C
- Lifetime:30,000hrs

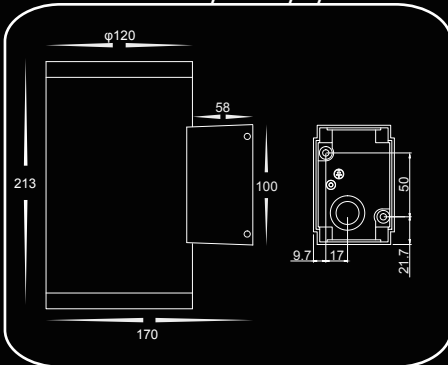
#### S-AK-WL/18/4/B

- Voltage Range – 220-240V 50/60Hz
- CCT – 4000K
- IP65 / IK05
- PF>0.9
- CRI80
- 18W – 100Lm/W
- 1,800lm
- Temp Range -20 – 45°C
- Lifetime:30,000hrs

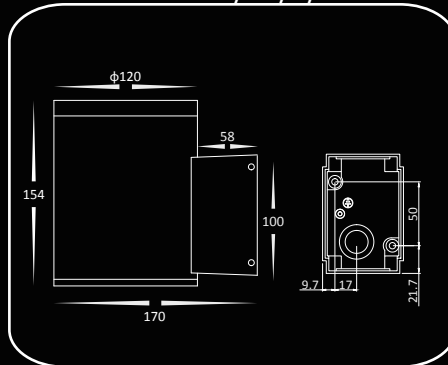
#### S-AK-WL/24/4/B

- Voltage Range – 220-240V 50/60Hz
- CCT – 4000K
- IP65 / IK05
- PF>0.9
- CRI80
- 24W – 100Lm/W
- 2,400lm
- Temp Range -20 – 45°C
- Lifetime:30,000hrs

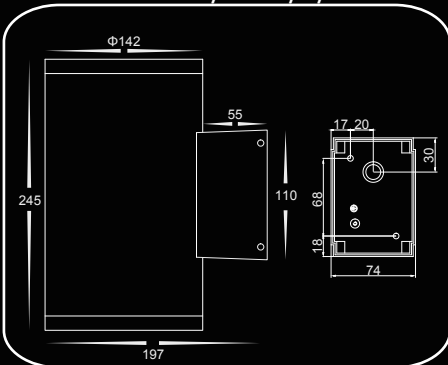
S-AK-WL/2X18/4/B



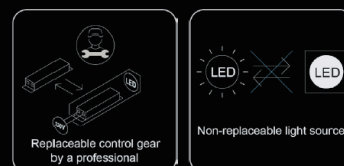
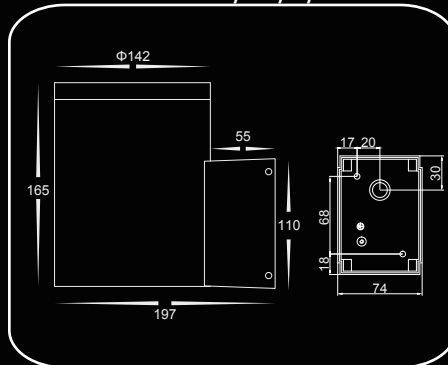
S-AK-WL/18/4/B



S-AK-WL/2X20/4/B



S-AK-WL/24/4/B



The light source of this luminaire is not replaceable; when the light source reaches its end of life the luminaire shall be replaced, utilising the existing driver.

### ⚠ Important Disposal Information for Waste Electrical & Electronic Equipment (WEEE)

Please be aware that Waste Electrical and Electronic Equipment (WEEE), identified by the crossed-out wheelee bin symbol, must NOT be disposed of with regular household waste.

We encourage you to support reuse, recycling, and responsible recovery by returning this product—once it reaches the end of its life—to an appropriate collection point. This may include a designated waste equipment centre, a civic amenity site, or the retailer where you originally purchased the item or are buying a replacement.

Improper disposal of this equipment may release substances that are harmful to both human health and the environment. To prevent this, it is essential that WEEE is separated from general waste and processed through approved recycling channels.

The crossed-out wheelee bin symbol serves as a reminder that this product requires special handling in accordance with local WEEE regulations.

**IP65**

**CE** **UK CA** **RoHS**  
Compliant

