

# Installation Instructions

## Jaxor: S-JX1-\_/40/\_



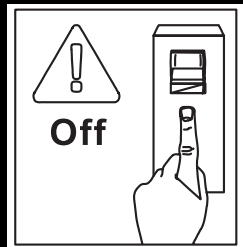
Unit 8 Gemini 8 Business Park  
Charon Way  
Apollo Park  
Warrington  
WA5 7AE

[www.spectre-lighting.com](http://www.spectre-lighting.com)

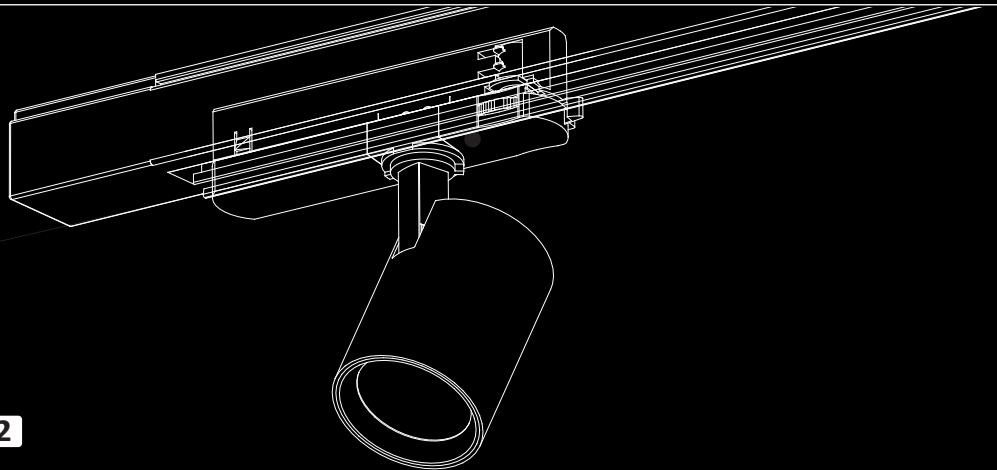
### Safety Precautions.

- Power Isolation: Always disconnect the power supply before installing, removing, or servicing the product to prevent electric shock, injury, or damage.
- Qualified Installation: Luminaires should be installed by a certified electrician in accordance with current local wiring regulations.
- Damaged Components: Replace any broken or faulty parts promptly. Spectre Lighting cannot be held liable for issues resulting from poor installation practices.
- Ambient Temperature: Ensure the room temperature does not exceed 25°C during operation.
- Power Supply Compatibility: These products are intended for use with a mains supply of 230–240V~ at 50/60Hz.
- Inrush Current Consideration: You may need to upgrade your MCBs to accommodate higher inrush currents.
- Insulation Testing: Do not perform insulation resistance tests while the product is connected to the circuit.
- Preparation: Review all instructions thoroughly and confirm you have the necessary tools and accessories for proper installation.

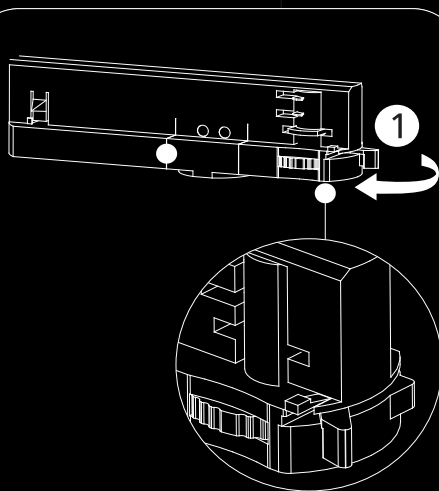
5yrs  
Warranty



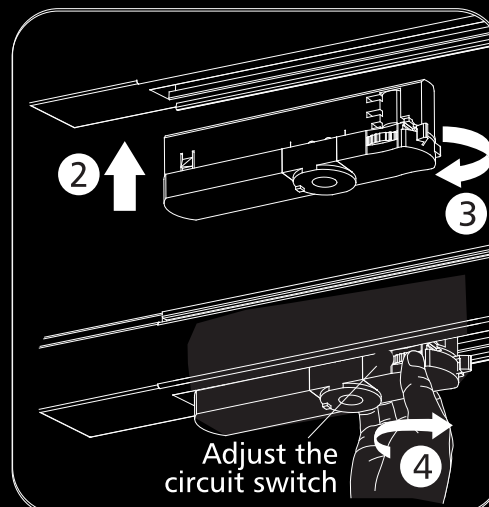
1



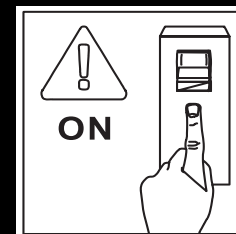
2



3



4



5

### Installation Instructions

Fig 1. Ensure power supply is isolated before proceeding with installation.

Fig 2. Rotate lock into position.

Fig 3. Align track adaptor into correct orientation of the track using the track / track spot adaptor detail as guidance.

Fig 4. Rotate the track adaptor dial to select the desired circuit number for the luminaire to be powered by.

These products are intended for use with a mains supply of 220–240V~ at 50/60Hz.

Fig 5. Reinstate power supply.

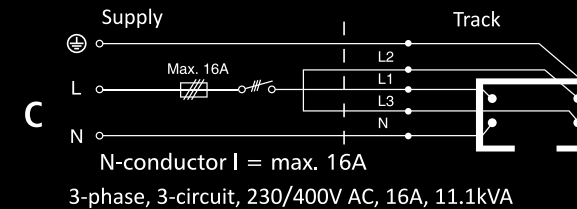
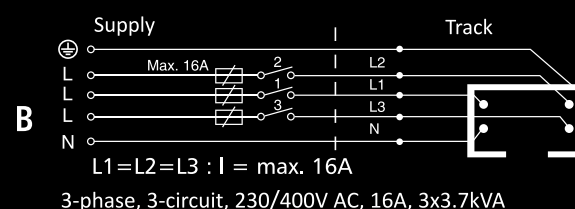
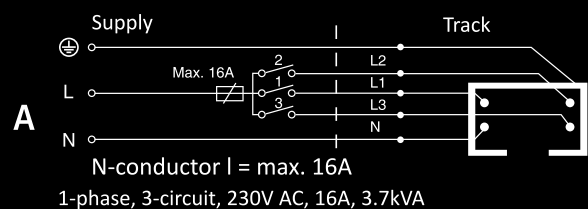
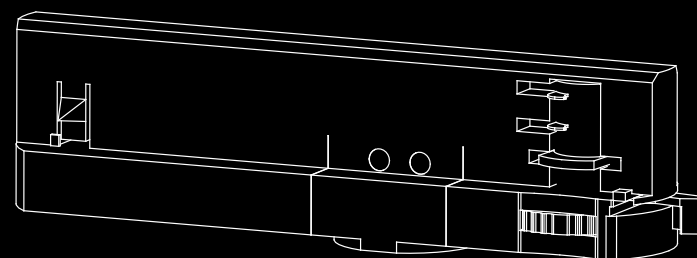
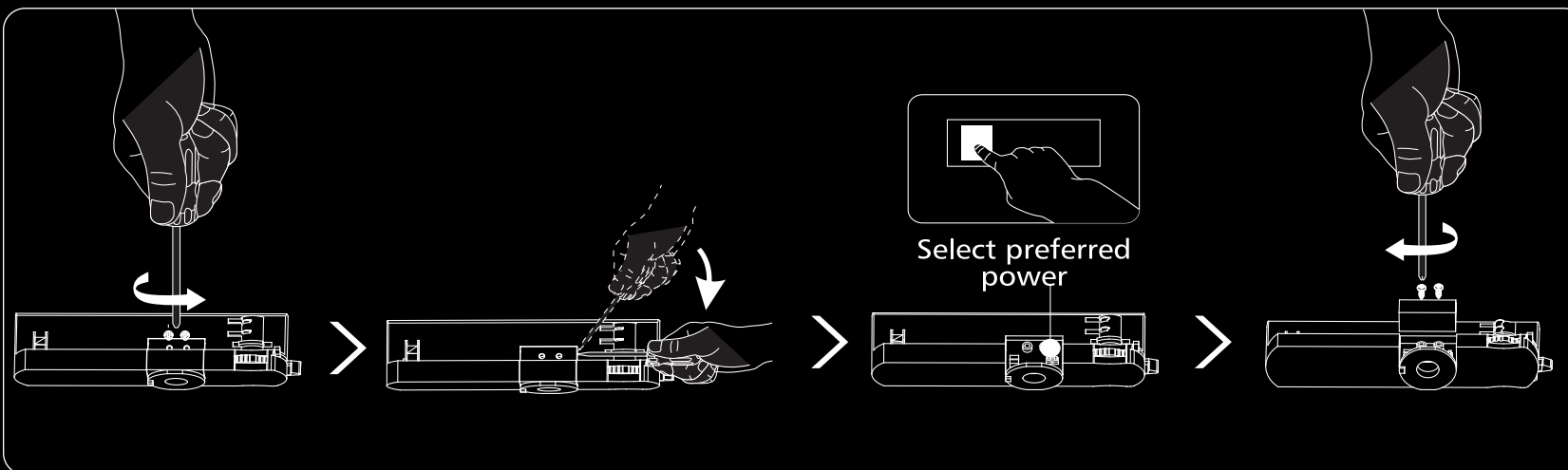
IP20





Unit 8 Gemini 8 Business Park  
Charon Way  
Apollo Park  
Warrington  
WA5 7AE

www.spectre-lighting.com



S-JX1-15/_			
1	2	Lout	Power rated
-	-	250mA	10W
ON	-	300mA	12W
-	ON	350mA	14W
ON	ON	400mA	15W

S-JX1-25/_			
1	2	Lout	Power rated
-	-	450mA	18W
ON	-	500mA	20W
-	ON	550mA	22W
ON	ON	600mA	25W

S-JX1-32/_			
1	2	Lout	Power rated
-	-	650mA	25W
ON	-	700mA	28W
-	ON	750mA	30W
ON	ON	800mA	32W

S-JX1-38/_			
1	2	Lout	Power rated
-	-	850mA	32W
ON	-	900mA	34W
-	ON	950mA	36W
ON	ON	1000mA	38W

# Installation Instructions

## Jaxor: S-JX1-\_/40/\_



Unit 8 Gemini 8 Business Park  
Charon Way  
Apollo Park  
Warrington  
WA5 7AE

[www.spectre-lighting.com](http://www.spectre-lighting.com)

### Specification

#### S-JX1-15/\_

- Voltage Range – AC 220-240V 50/60Hz
- CCT – 3000K / 4000K / 6500K
- CRI90
- IP20
- 10W/12W/14W/15W
- 2,000Lm @15W / 140Lm/W
- Temp Range –20°C –45 °C

### Specification

#### S-JX1-25/\_

- Voltage Range – AC 220-240V 50/60Hz
- CCT – 3000K / 4000K / 6500K
- CRI90
- IP20
- 18W/20W/22W/25W
- 3,700Lm @25W / 160Lm/W
- Temp Range –20°C –45 °C

### Specification

#### S-JX1-32/\_

- Voltage Range – AC 220-240V 50/60Hz
- CCT – 3000K / 4000K / 6500K
- CRI90
- IP20
- 25W/28W/30W/32W
- 4,800Lm @32W / 150Lm/W
- Temp Range –20°C –45 °C

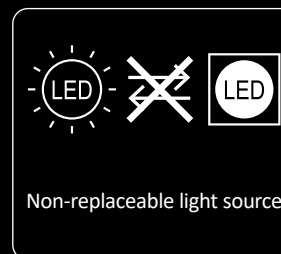
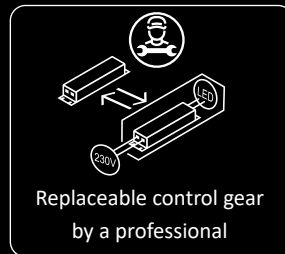
### Specification

#### S-JX1-38/\_

- Voltage Range – AC 220-240V 50/60Hz
- CCT – 3000K / 4000K / 6500K
- CRI90
- IP20
- 32W/34W/36W/38W
- 6,250Lm @38W / 170Lm/W
- Temp Range –20°C –45 °C

## Dimensions

S-JX1-15/_	S-JX1-25/_ S-JX1-32/_	S-JX1-38/_
Ø64*H147mm	Ø83*H174mm	Ø92*H200mm



The light source of this luminaire is not replaceable, when the light source reaches its end of life the luminaire shall be replaced, utilising the existing driver



Important Disposal Information for Waste Electrical & Electronic Equipment (WEEE)

Please be aware that Waste Electrical and Electronic Equipment (WEEE), identified by the crossed-out wheellie bin symbol, must NOT be disposed of with regular household waste.

We encourage you to support reuse, recycling, and responsible recovery by returning this product—once it reaches the end of its life—to an appropriate collection point. This may include a designated waste equipment centre, a civic amenity site, or the retailer where you originally purchased the item or are buying a replacement.

Improper disposal of this equipment may release substances that are harmful to both human health and the environment. To prevent this, it is essential that WEEE is separated from general waste and processed through approved recycling channels.

The crossed-out wheellie bin symbol serves as a reminder that this product requires special handling in accordance with local WEEE regulations.

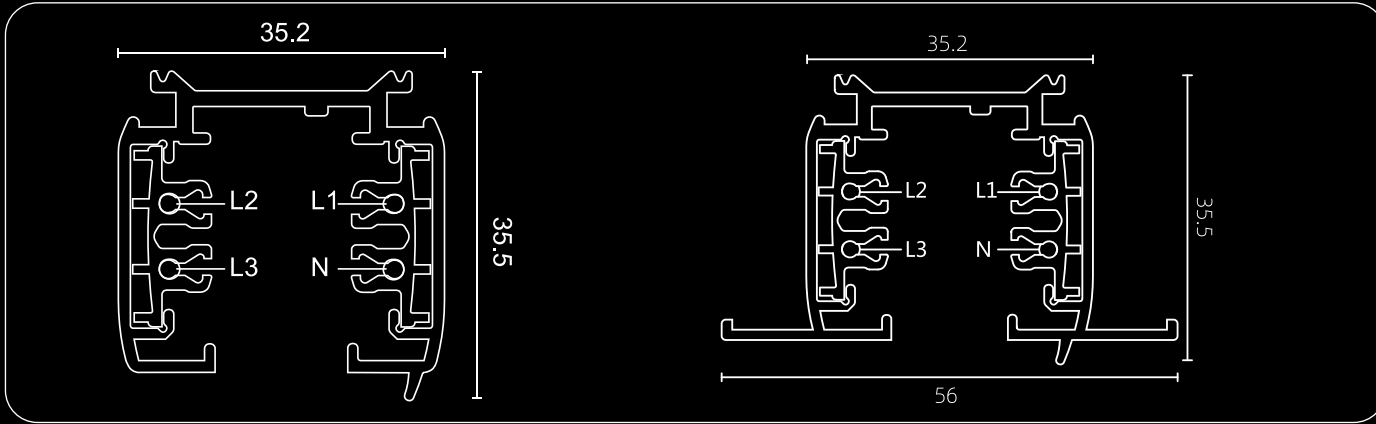
IP20

CE UK CA RoHS Comp Liant



# Installation Instructions

## Dimensions



Unit 8 Gemini 8 Business Park

Charon Way

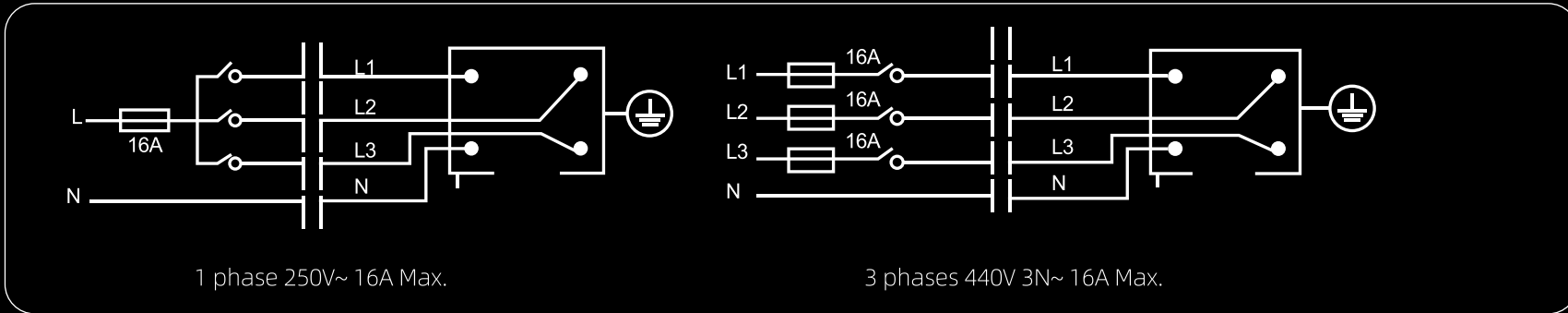
Apollo Park

Warrington

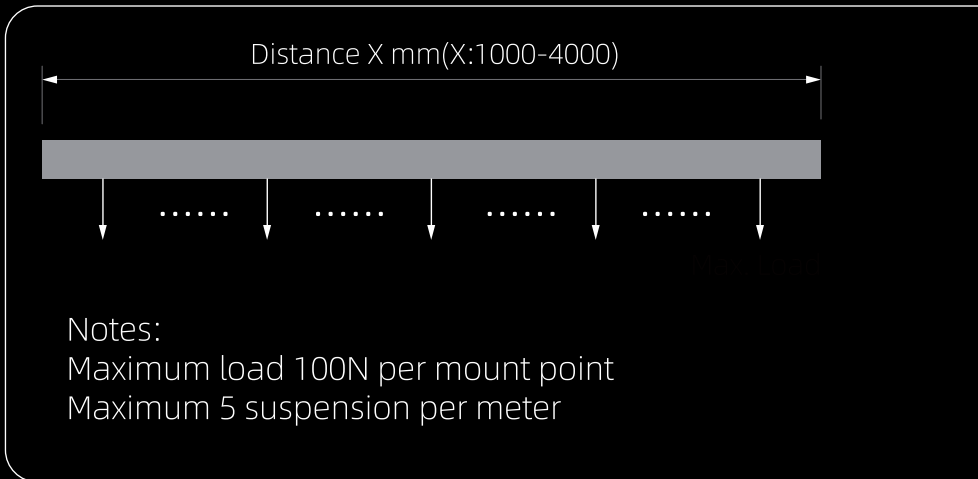
WAS 7AE

[www.spectre-lighting.com](http://www.spectre-lighting.com)

## Connecting Diagram

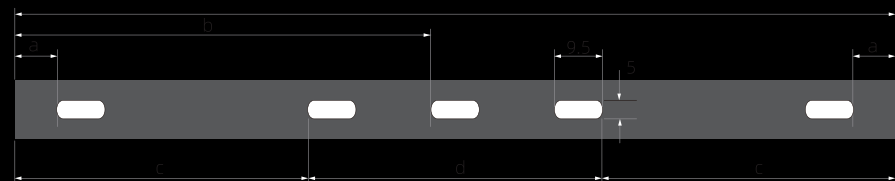


## Mechanical load diagram

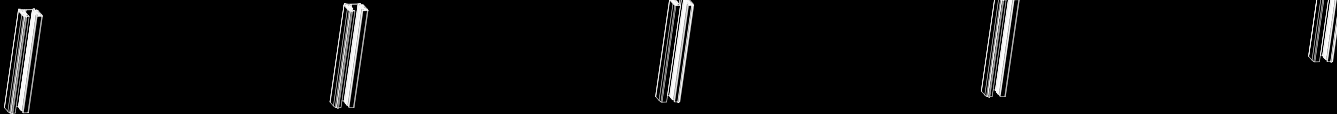
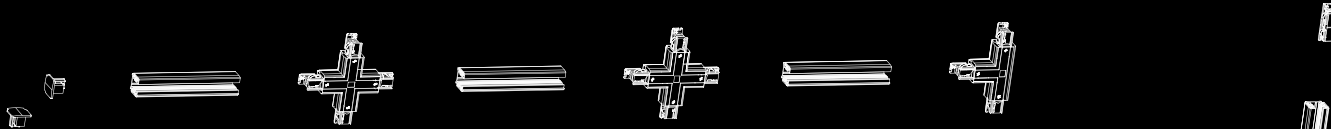
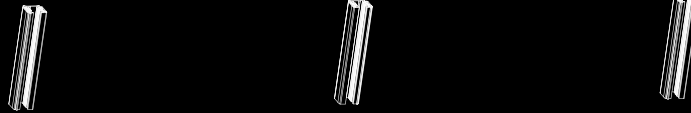


## Fixing point dimensions

L / mm	a / mm	b / mm	c / mm	d / mm	F Max./N
1000-1499	125				300N
1500-2499	125	995			450N
2500-3499	125		914	1172	600N
3500-4000	125		1247	1506	600N



# Installation Instructions



Unit 8 Gemini 8 Business Park  
Charon Way  
Apollo Park  
Warrington  
WA5 7AE

[www.spectre-lighting.com](http://www.spectre-lighting.com)



S-JX-S3P/1MTR/B  
S-JX-S3P/1MTR/W  
S-JX-S3P/2MTR/B  
S-JX-S3P/2MTR/W



S-JX-R3P/1MTR/B  
S-JX-R3P/1MTR/W  
S-JX-R3P/2MTR/B  
S-JX-R3P/2MTR/W



S-JX-S3P/LE/L/B  
S-JX-S3P/LE/L/W



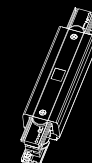
S-JX-S3P/LE/R/B  
S-JX-S3P/LE/R/W



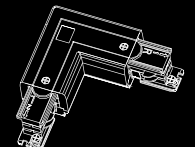
S-JX-S3P/EC/B  
S-JX-S3P/EC/W



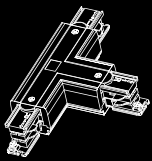
S-JX-S3P/FC/B  
S-JX-S3P/FC/W



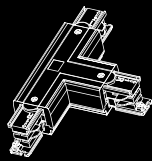
S-JX-S3P/SC/B  
S-JX-S3P/SC/W



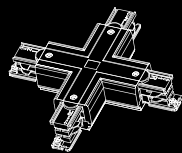
S-JX-S3P/LC/B  
S-JX-S3P/LC/W



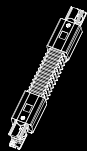
S-JX-S3P/TC/L/B  
S-JX-S3P/TC/L/W



S-JX-S3P/TC/R/B  
S-JX-S3P/TC/R/W



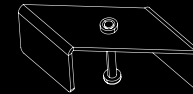
S-JX-S3P/XC/R/B  
S-JX-S3P/XC/R/W



S-JX-S3P/FXC/B  
S-JX-S3P/FXC/W



S-JX-S3P/SK/B  
S-JX-S3P/SK/W



S-JX-R3P/MK



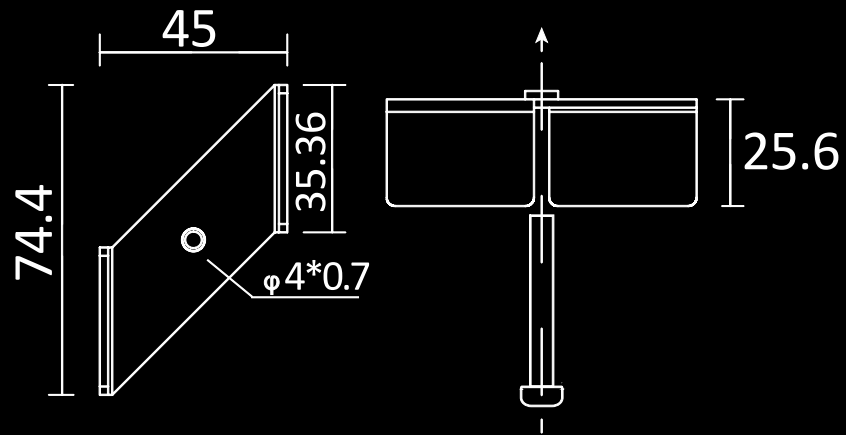
S-JX-S3P/TBMK/B  
S-JX-S3P/TBMK/W



S-JX-S3P/SKC/B  
S-JX-S3P/SKC/W

# Installation Instructions

## Dimensions

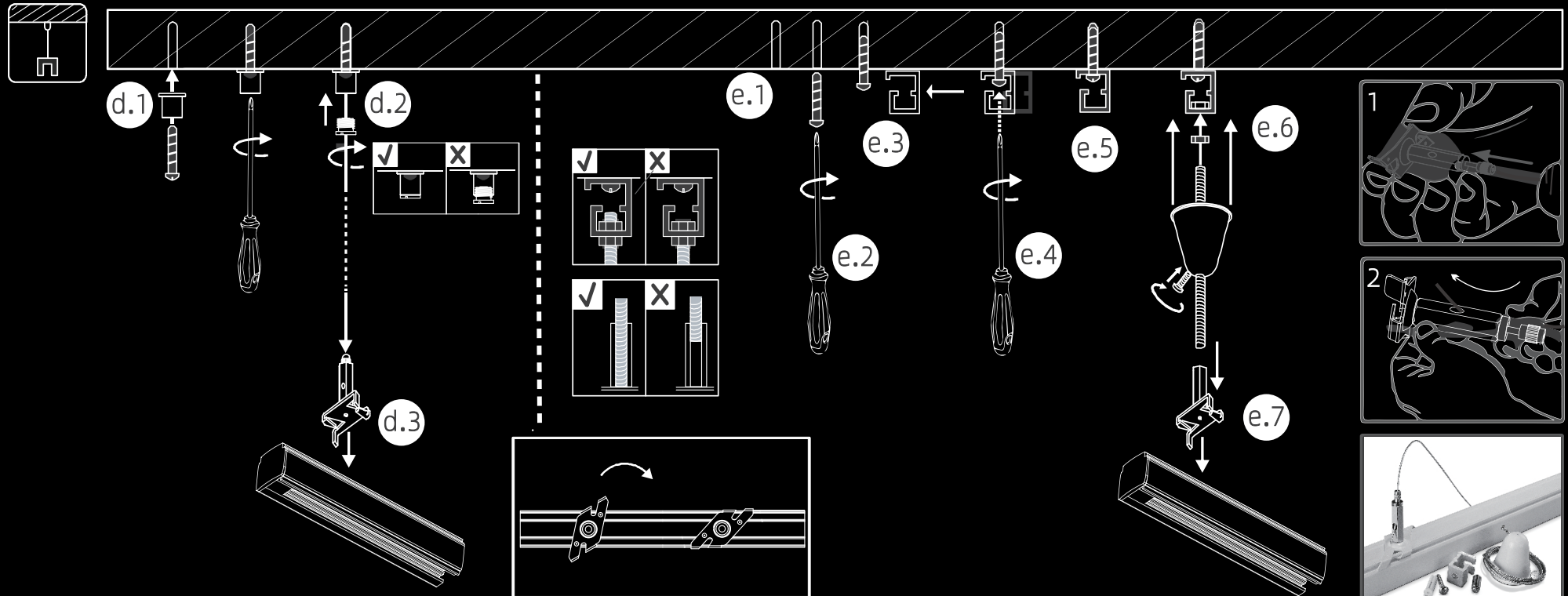


Notes:  
Apply to  
6 Wires recessed track system  
4 Wires recessed track system



Unit 8 Gemini 8 Business Park  
Charon Way  
Apollo Park  
Warrington  
WA5 7AE

[www.spectre-lighting.com](http://www.spectre-lighting.com)

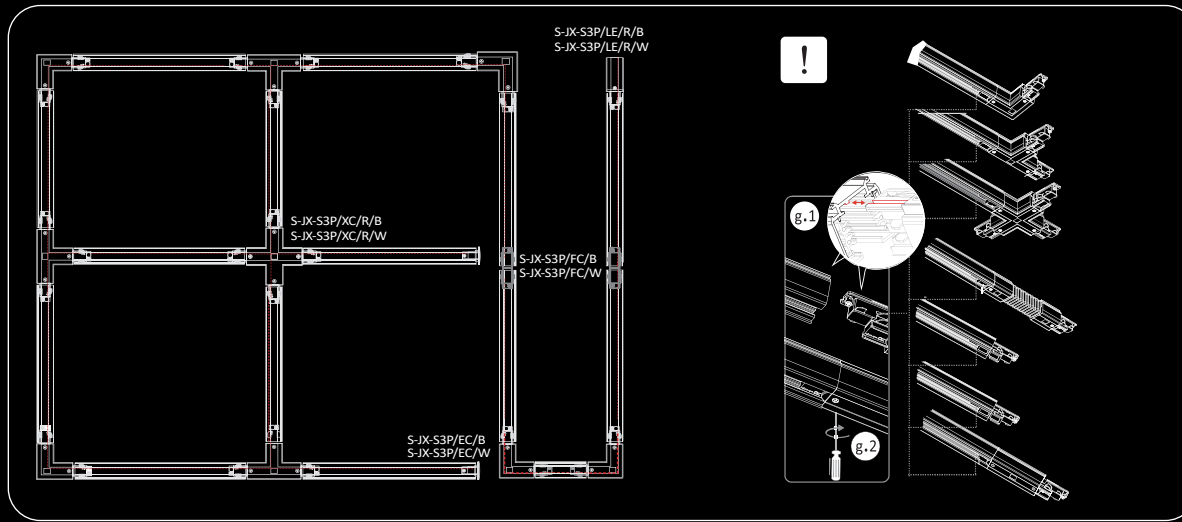


# Installation Instructions



Unit 8 Gemini 8 Business Park  
Charon Way  
Apollo Park  
Warrington  
WA5 7AE

[www.spectre-lighting.com](http://www.spectre-lighting.com)



### Troubleshooting

If the track system is out of power, or the voltage value is abnormal, please check whether the following abnormal conditions exist in the installation:

1. Please ensure the connection between track and accessories is in the right direction, refer to the right picture.
2. Please ensure the direction of the rib in tracks is consistent.
3. Please ensure the wiring of the accessories and the connection of the accessories with tracks correct and firm enough.
4. Please ensure that the live end connector is wired according to the markings.

### Disclaimer

1. It is forbidden to apply paint, glue, etc. to this product.
2. This product is suitable for indoors, not outdoors.
3. It is recommended to use POWERGEAR track system, compatibility with other track system is not guaranteed.
4. If the structure or wiring of this product is not used/modified according to the instructions, resulting in damage to this product or related products, POWERGEAR doesn't continue to maintain the after-sales commitment.
5. Product optimization and version upgrade will not be noticed, please refer to the actual product received. If you have any questions, please contact our sales staff in time.
6. POWERGEAR reserves the right of final interpretation of this product.

### Troubleshooting

If the track system is out of power, or the voltage value is abnormal, please check whether the following abnormal conditions exist in the installation:

1. Please ensure the connection between track and accessories is in the right direction, refer to the right picture.
2. Please ensure the direction of the rib in tracks is consistent.
3. Please ensure the wiring of the accessories and the connection of the accessories with tracks correct and firm enough.
4. Please ensure that the live end connector is wired according to the markings.

### Disclaimer

1. It is forbidden to apply paint, glue, etc. to this product.
2. This product is suitable for indoors, not outdoors.
3. It is recommended to use POWERGEAR track system, compatibility with other track system is not guaranteed.
4. If the structure or wiring of this product is not used/modified according to the instructions, resulting in damage to this product or related products, POWERGEAR doesn't continue to maintain the after-sales commitment.
5. Product optimization and version upgrade will not be noticed, please refer to the actual product received. If you have any questions, please contact our sales staff in time.
6. POWERGEAR reserves the right of final interpretation of this product.